



# CRUISE COMPASS

## DAY 1

FRIDAY, JUNE 12, 2015

### *Quantum of the Seas<sup>SM</sup>*

#### Today's Itinerary:

Singapore

All Aboard: 4:00 pm

#### Weather Forecast:

Mostly Cloudy, with scattered  
thunderstorms 88 °F / 31 °C



Sunrise: 6:58 am

Sunset: 7:10 pm

Wind: Southerly 5-10

UV Index: 10 very High

#### Tomorrow's Itinerary:

Port Klang, Malaysia

### TODAY'S FEATURED EVENTS

look for daily deals inside >

★★★★★

**ROYAL  
RECOMMENDS**

BROUGHT TO YOU BY  
**YOUR CRUISE DIRECTOR  
KEN RUSH**

#### A "TASTE OF QUANTUM"

Welcome aboard the Quantum of the Seas for this exciting 3 day adventure. Please note that because we only have 72 hours together, you might not be able to see every show, do every activity and eat at every restaurant however hopefully this will give you a "taste" of everything you can do when you come back with us on a regular cruise! But don't worry, we have added as much as we possibly can in the next three days so you can sleep when you get home!

**CASINO ROYALE PREMIUM PLAYER PROGRAM** Upon enrollment you will be eligible for the 5% cash advance transaction fee to be waived and complimentary drinks while gaming. See your Casino Hosts for further details on the commissions and comps earned for this program. Sign up with the Casino Cashier.

**BEVERAGE PACKAGES** Raise a glass to big savings. Pay just one flat price and enjoy a wide selection of beers, wines and spirits, plus non-alcoholic beverages, for the duration of your cruise. It's the ultimate in convenience and value. Available at all bars, purchase onboard today.

**BOARDING DAY SPECIAL: TRAVELERS TENSION** Let us take away all your stress and tension with our Travelers Tension Special: Receive a warm oil 25 minute back, neck and shoulder massage followed by a 25 minute pressure point foot and ankle massage. 50 minutes of pure relaxation for only \$119. Limited availability, call now on 4600 or visit the Vitality Spa on Deck 15 forward.

**STAY CONNECTED FROM \$10 PER DAY** From hourly access to unlimited access for the entire voyage, with so many options there's sure to be one for you. On your personal device connect to the Wi-Fi network named "royal wi-fi." Open your preferred browser, navigate to any page and the Royal Caribbean online home page will appear. Choose the package to suit your needs.

### BE IN THE KNOW

**WOWbands** Inside your stateroom you will find our new Seapass wristband, called the WOWband. These ready-to-wear wristbands require just one tap, enabling you to efficiently navigate the ship and make onboard purchases, as well as access Royal iQ and your stateroom.

**Royal iQ Download** Track your luggage, manage your personal calendar, stay connected with calling and text and more. Royal iQ let's you manage every step of your vacation at your fingertips! Available for iOS and android devices and on Royal iQ stations throughout the ship.

**ALS Listening Devices** ALS devices are available at Guest Services and will work in the Royal Theater and Two70. Please ask the Cruise Director's Staff at the entrance to any of our theaters if you require any assistance with your ALS listening device and they will be happy to help. Thank you for your cooperation and enjoy the show.

**Helpful Health Information** Medical experts tell us that the best way to prevent colds, flu or gastrointestinal illnesses - such as a Norovirus that can be transferred easily through person-to-person contact - is to simply wash your hands thoroughly with soap and warm water after toilet breaks and again before eating anything. Symptoms of Noroviruses include an upset stomach, vomiting and diarrhea. According to the US Centers for Disease Control and Prevention, Noroviruses affect 23 million Americans on land each year. In fact, the only illness that is more prevalent is the common cold. Should you experience any gastrointestinal illness, please visit the ship's medical facility for a consultation and treatment if necessary.

**Compulsory Guest Assembly Drill** At the sound of the ship's whistle and alarm bells, proceed to your Assembly Station (your Assembly Station number is printed on your SeaPass card as well as your WoW Band) at approximately 4:30 pm, Decks 4, 5. All bars will close at 4:00 pm in preparation for the Guest Assembly Drill. All other guest service facilities will close at 4:15 pm until the completion of the Drill.



**#ROYALWOW** Share your WOW moments!





### DRINK OF THE DAY

Enjoy the Drink of the Day for only \$7.95. The featured speciality cocktail varies from bar to bar, so be sure to explore all your refreshment possibilities.

## DISCOVER SHOPPING ONBOARD



# BVLGARI

DUTY FREE

## CASINO

*Royale* SM

### Blackjack Fact

Did you know a face card and ace are dealt approximately every 20 hands in Blackjack? That's why it's so popular. Try your luck today. See you there.

## TOP REASONS TO BOOK OUR TOURS.

First Off The Ship

Hassle-Free 24-Hour Cancellation Policy

Guaranteed Return To Ship

In-Depth Destination Expertise



**SHORE**   
**EXCURSIONS**

## OUR DAILY DEALS

**PARADISE LOTTO \$10 TICKETS** This is your chance to cash in on the lotto win of a lifetime! You could win over \$800,000 in our Paradise Lotto Drawing! Buy your lucky tickets for only \$10 at the Casino Cash Desk, Deck 3.

**BE SURE TO CHECK OUT OUR STATE OF THE ART TECHNOLOGY AT THE PHOTO GALLERY** Touch one of our digital photo kiosks with your SeaPass card or WOWband and see all your photographs. We pride ourselves on being environmentally friendly and no longer print all pictures - only the ones you'd like to take home.

**GUESS THE PRICE OF THE PABLO PICASSO** Stop by and guess the value of this original artwork by the legendary Spanish master. The closest guess will win an exciting art prize package! The Art Gallery is open all day to preview some of the amazing artworks available for live bidding at our exciting art auction, Art Gallery, Deck 5 aft & 5:00 pm - 10:00 pm, Royal Esplanade, Deck 4.

**CASINO ROYALE** We consider our Casino Royale to be a little bit of Vegas, a little bit of Monte Carlo and a lot of Royal Caribbean fun. From Blackjack and Roulette to Ultimate Texas Hold 'em and Baccarat, you'll find all types of table games and slots for every level. Take a lesson and learn a new game. Check your daily Cruise Compass for hours of operation and scheduled events.

**THERMAL SUITE - TOTAL RELAXATION** Experience exclusive relaxation in the Thermal Suite. Enjoy the aromatherapy steam chambers and tropical rain forest, or just relax on our heated stone beds. Purchase your cruise pass today and prepare to indulge. Limited passes available, so don't miss out! Call the Vitality Spa by dialing 4600.

**REGALIA JEWELRY SALON GRAND OPENING** Join us for a preview of the exclusive collections we carry onboard from Sophia Fiori and Alberto Collections, inside our Regalia Fine Jewelry and Watches Boutique. We will be introducing you to our other amazing brands we carry and give you a heads up of the events happening this cruise on the Royal Esplanade. The presentation will be followed by a draw, so you can start your voyage with a lucky charm. Join us in Regalia this evening for this exciting preview, 9:30pm, Royal Esplanade, Deck 4.

## SHORE EXCURSION HIGHLIGHTS

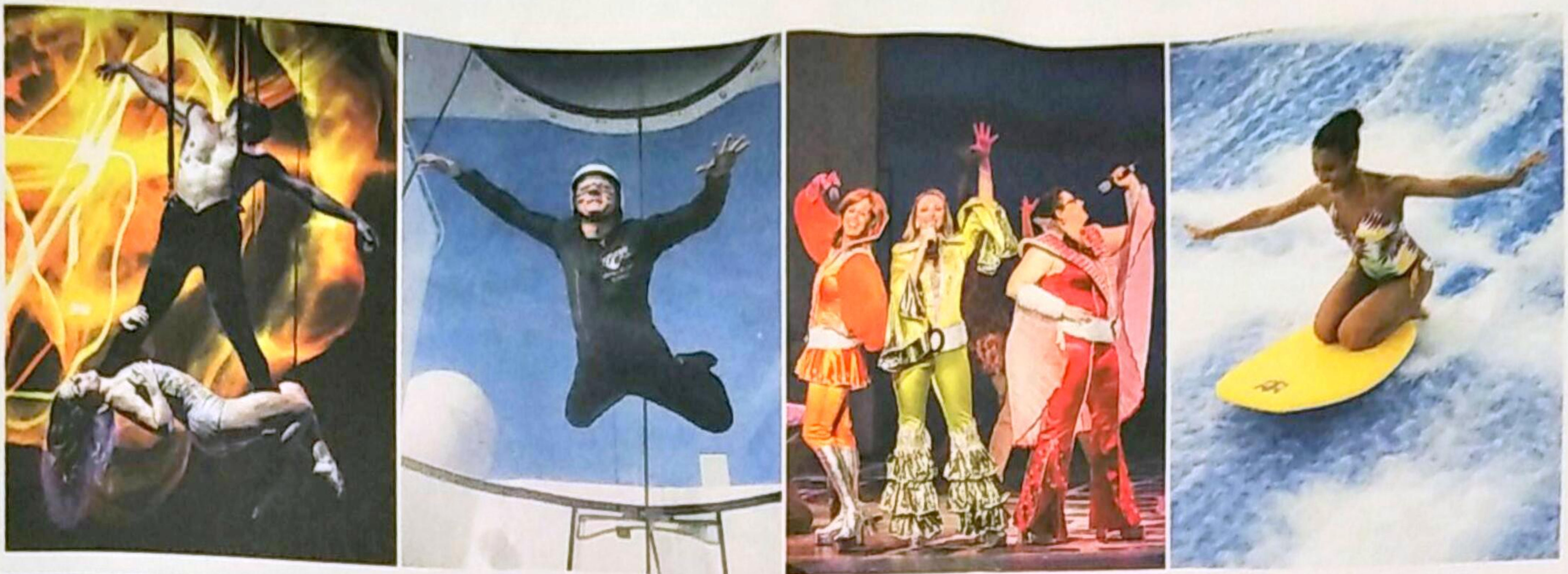
**WHICH EXCURSIONS WILL YOU ENJOY?** Find out about all our fabulous shore excursions available on your cruise vacation. Tune into Channel 15 on your stateroom TV for more details. Book through the Royal iQ app on your mobile device or at the iQ station at Shore Excursions, Deck 5. Have fun planning your adventures!

**KUALA LUMPUR ON YOUR OWN** Independently explore the beauty of Kuala Lumpur. You'll set off on an hour journey to the capital city. Your drop off will be at Pavilion Shopping Mall in the famous Bukit Bintang area not far from Bintang Walk, a street with many themed restaurants and cafes offering local and international cuisine. The Petronas Twin Towers, one of the world's tallest building, is only a 10 minute walk away.

**SHORE**   
**EXCURSIONS**  
DELIVERING THE DESTINATION™

The best part about traveling is being able to do things you can't do back home. It's not every day you can explore like you'll be doing this cruise. You'll have the experiences of a lifetime and of course bragging rights with your friends and family! Get details for these ports of call and available shore excursions at the Shore Excursions Desk.





**ENTERTAINMENT & ACTIVITIES SPOTLIGHT** ? Assistive listening system available - obtain receivers at Guest Services, Deck 4.

**HEADLINER VARIETY SHOW** Starring Acapella Group Metro, a versatile and dynamic vocal group who will give us a taste of their talent in tonight's show and will be back with us on Sunday evening in their own show. Also starring tonight is Jeremy "Penguin" Ansley - As one of the top juggling talents to come out of New Zealand, Jeremy has combined his unique and world class skills with a fantastic and quirky clown character to create his wonderful show, "Juggling, Penguins & Comedy." Royal Theatre, Deck 4, 5.

**GROOVY TOWN** Get ready to get down at that 70s party featuring funk, R&B and old-school grooves. A hip trip in the Music Hall's time machine transports you to Groovy Town, where both a DJ and live band keep the party going. Show off your best moves - and maybe your platform shoes - at the Chic "Le Freak" dance competition. With special guest appearance from the Mayor of Groovy Town and Groove Host, Ken Rush, your Cruise Director at 10:00 pm. Groovy Town from 9:30 pm - 11:00 pm Music Hall, Decks 3, 4.

**SEAPLEX** The largest indoor active space at sea is also the most revolutionary. There's never been a venue like SeaPlex<sup>SM</sup> before: circus school and full-size basketball court by day, first-ever roller rink and bumper cars at sea by night. Not to mention delicious bites provided by the first food truck to ever set sail and music from a floating DJ booth suspended overhead. This is going to change the way you play. Located on Decks 15 and 16, aft.

**RIPCORD BY IFLY** Experience the exhilaration of skydiving without ever leaving the deck courtesy of RipCord by iFLY<sup>®</sup>. For the first time ever, feel what it's like to fly, as you float on air within the safe confines of this groundbreaking simulator. It's a whole new thrill for thrill seekers of all kinds. Located on Deck 16, aft.

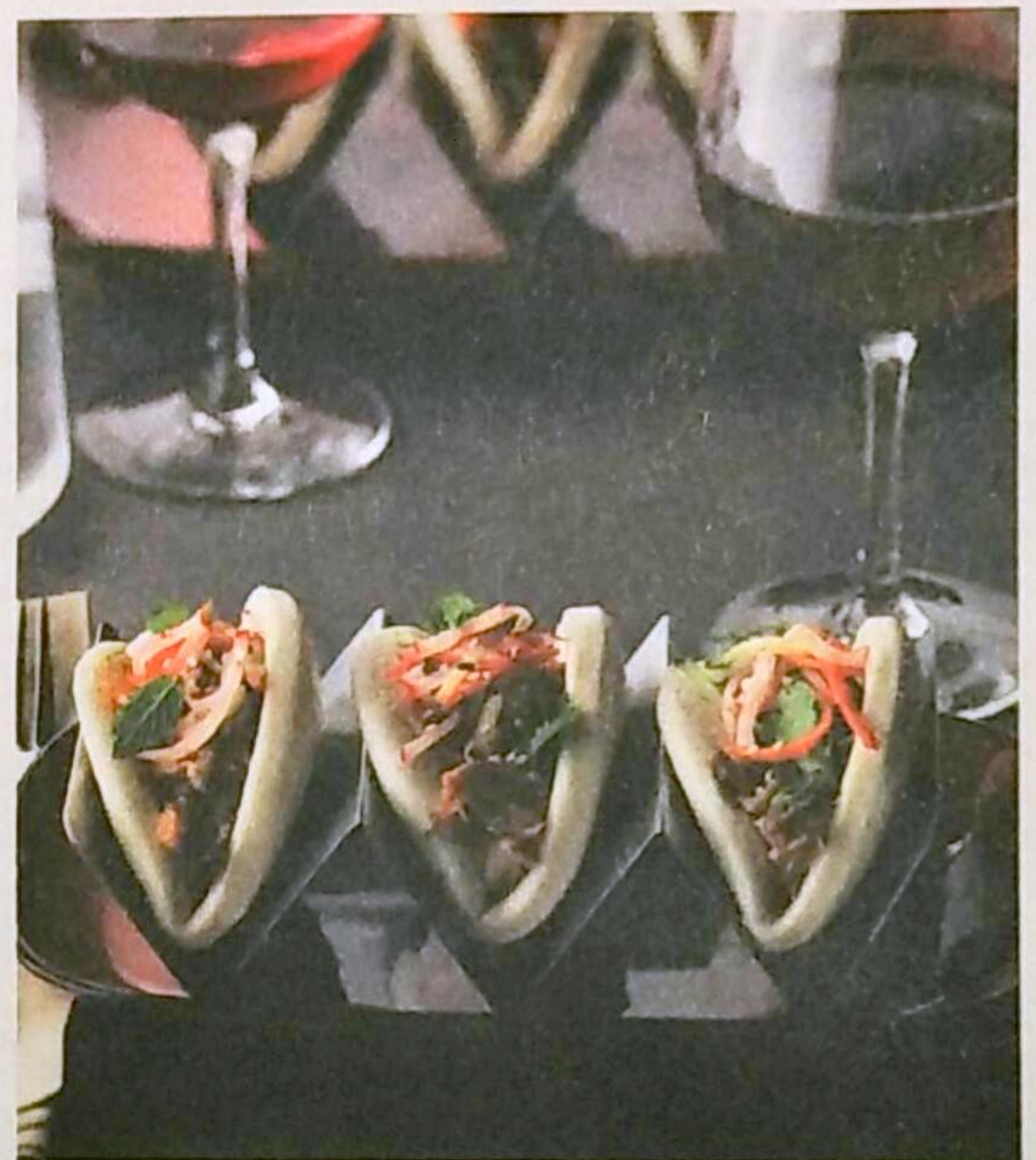
**ON THE MENU**

**WINDJAMMER MARKETPLACE** Windjammer Marketplace, a Royal Caribbean dining mainstay, is a global culinary pavilion that invites you to explore the world, dish by dish. Enticing food islands weave throughout, showcasing international fare while mapping your way between new, interactive stations. Here, staff prepares signature specialties to your specs—like fresh-pressed paninis, juices blended before your eyes, and fluffy omelets—all part of a menu that changes daily. Located on Deck 14, aft.

**BIONIC BAR POWERED BY MAKR SHAKR** All you have to do is step inside and Bionic Bar transports you eons ahead to another place in time, where the space pulses with electricity and the possibilities are endless. Hover near the bar and witness the technological marvel making it all possible: the first true robotic bar, not just at sea, but anywhere. Located on Deck 5, midship.

**ULTIMATE DINING PACKAGE - \$20/DAY** Pay one set price and dine in any of our specialty restaurants every day of your cruise. Whatever you're craving, there's something for every palate.

**PREMIUM DINING PACKAGE - UP TO 30% SAVINGS** Now Serving: More delicious memories... make three or more reservations at your favorite specialty restaurants and enjoy savings of up to 30%.



**NEXT CRUISE DESK** Book your next cruise vacation onboard today and receive up to \$500 Instant Onboard Credit to use on this cruise vacation plus 50% off second guest! We are located on Deck 5 next to Wonderland. \*terms and conditions apply.



## 1 OPEN HOURS

### THE FOLLOWING SERVICES AND VENUES ARE OPEN 24 HOURS:

Challenger's Video Arcade, Deck 15

Emergency Only, Dial 911

Guest Services, Dial 0, Deck 4

Library, Deck 6 (enter on Deck 5)

Operator, Dial 0

Photo Kiosk, Deck 5

Royal Caribbean Online™, Library, Deck 6  
(enter through two70, Deck 5)

### Royal IQ Stations:

Dining Corridors, Decks 3, 4;

Guest Services, Deck 4;

NextCruise, Deck 5

Shore Excursion Kiosks, Deck 5

Selected Pools & Hot Tubs, Deck 14

Windjammer Marketplace, Deck 14

Art Gallery	1:00 pm - 3:00 pm / 5:00 pm - 10:00 pm	Deck 5
Art - Free Welcome Aboard Gift	6:00 pm - 9:00 pm	Deck 5
Cartier Espace	9:00 pm - 11:00 pm	Deck 4
Casino Royale	9:00 pm - late	Deck 3
H2O Zone	Noon - 8:00 pm	Deck 14
Internet Assistance	11:00 am - 4:00 pm / 5:00 pm - 7:00 pm	Deck 4
Medical Facility (Dial 51)	4:00 pm - 7:00 pm	Deck 2
NextCruise Office	Noon - 6:00 pm	Deck 5
Shops Onboard	9:00 pm - 11:00 pm	Deck 4
Shore Excursions Desk	Noon - 8:00 pm	Deck 5
Show Reservations - Michael's Genuine Pub	11:30 am - 3:30 pm & 5:00 pm - 7:00 pm	Deck 4
Sports Desk	Noon - 6:00 pm	Deck 15
Vitality Fitness Center	11:30 am - 1:00 am	Deck 16
Vitality Spa (Dial 4600)	11:30 am - 10:00 pm	Deck 15

### Sports Information, Rules & Regulations

Please bring your SeaPass™ to all activities. Parents must be present to sign a waiver for children under the age of 18 and must stay to supervise children under the age of 13 years. For rules and restrictions and sign up requirements, please see staff at the appropriate venue.

**North Star** - Weather permitting. Wait time varies. Please follow the instructions of the Gondola Operator. Children less than 42" may not ride. Children less than 48" must be accompanied by a supervising companion of at least 14 years of age. Maximum rider weight is 300 lbs. Guests with the following conditions are advised not to ride: Expectant Mothers, Persons with a history of back and/or neck problems or pain. Those susceptible to motion sickness, vertigo or claustrophobia and those under the influence of drugs or alcohol. The line will be closed 30 minutes - 1 hour before closing time.

**FlowRider®** - Please remove all jewelry items. Minimum height requirement; Boogie Boarding is 52", Stand Up Surfing is 58". The line will be closed 30 minutes - 1 hour before closing time.

**Rock Climbing Wall** - Please bring socks, T-shirt and shorts/pants; clothing must be dry. Minimum age is 6 years. Sign ups will close 15-30 minutes before closing time.

**RipCord™ by IFLY®** - Please remove all loose articles: including cameras, watches, jewelry, purses, wallets, and glasses and ensure pockets are completely empty. Please tie back long hair and wear tennis shoes/sneakers or bring socks and clothing must be dry. Minimum age of 3 years old and guests under 6' tall have maximum weight of 230 lbs, guests over 6' tall have maximum weight of 250 lbs.

**Medical Facility** Quantum of the Seas has a well equipped medical facility with two Doctors and four nurses in attendance. The medical facility is located on Deck 2 aft. Please use the aft stairways (by the restaurants). Guests are charged for services, and limited medications are available for a fee. Please refer to opening hours above for today's hours.

+ IN CASE OF AN EMERGENCY, CALL 911.

**Smoking Policy** All indoor public spaces onboard Quantum of the Seas are smoke free with the exception of Casino Royale which has designated smoking and non-smoking areas. Additionally, smoking is not permitted in the staterooms or on stateroom balconies. Designated outdoor smoking areas are located on the starboard side Deck 5 aft and portside of Deck 14 and 15 below and behind the big screen on the pool deck. Electronic cigarettes or e-cigarettes are only permitted within designated smoking areas. Cigars may only be smoked on open decks, Deck 15.

**Pool Towel Policy** For your convenience, towels for use at the pools and hot tubs onboard are available from the Towel Station on Deck 14. Towels can be exchanged at the Towel Station during the cruise. We kindly request our guests return their used towels to the towel station after every use to avoid any charges.

**MARPOL Convention** Discharge of all garbage into the sea is prohibited except provided otherwise. The MARPOL Convention and domestic law generally prohibit the discharge of most forms of garbage from ships into the sea. Violation of these requirements may result in penalties. All garbage is to be retained onboard and placed in the bins provided.

**Safety Onboard.** For the safety of all guests and crew, there is no running, playing or climbing on stairs and railings anywhere on the ship. Guests are cautioned to use available handrails throughout the ship, and to watch hands and fingers in doorways. Ladies should refrain from wearing high heels. Thank you for your cooperation.

**Important Notice to Our Young Cruisers** Those guests 17 years of age and under who are not accompanied by an adult must be clear of all public areas by 1:00 am each evening unless involved in an Adventure Ocean® activity / Teen activity. Get ready for fun. Check out the Daily Planner for each day's activities.

**Ship's Agent Information - Singapore** Kelvin K.A. Tan - Port Agent, Marina Bay Cruise Centre Singapore 61 Marina Coastal Drive Singapore 018947, email: ktan@wallem.com.sg, Mobile: +65-9739 3860, Office Number: +65-6602 6518

## CROWN & ANCHOR SOCIETY

A very warm Welcome Back to all our Crown & Anchor Society Members - The Crown and Anchor Society is our way of recognizing and rewarding our most loyal guests. Exclusive Onboard Events, Member Cruises and special savings are just a few of the ways we reward our most loyal guests. Enrollment is free. Not a member of the Crown & Anchor Society? Enroll today. You'll earn one Cruise Point for every night you stay with us, plus double the points when you purchase a suite! Points add up to the more you cruise with us. See your Loyalty & Cruise Sales Team on Deck 5 for more information.

## SPECIAL OFFERS

### INTERNET PACKAGE

Select the Internet Package of your choice and enjoy access to your favorite sites. Internet access is available at the computers on Deck 6 (upstairs in Two70) as well as on your own mobile device, simply open your web browser and select the package that's right for you! Internet assistance is available next to Guest Services on Deck 4. Please see open hours for times.

### 5 REASONS TO SHOP ONBOARD

Well, there's our "Shop with Confidence" guarantee, our price match guarantee, tax & duty free savings, lowest authorized price on all items, and our customer service center. Need we say more? Ask a sales associate for more details.

### ULTIMATE TEXAS HOLD'EM IS HERE

The one you've asked for, Ultimate Texas Hold'em, is here and ready for gaming action. Drop by Casino Royale today and try your skill against our dealer. Our friendly staff will teach you all you need to know about this popular game. Casino Royale, Deck 3.

### FOCUS PHOTO GALLERY

Our professional photographers will be capturing all your vacation memories from the time you board the ship. Stop by the Focus Photo Gallery at any time and touch the pad beside our digital photo screens with your SeaPass card or WOWband and see all your photographs.





# DAILY PLANNER

## DAY 1

FRIDAY, JUNE 12, 2015

### Quantum of the Seas<sup>SM</sup>

**Go paperless and plan your day. Download ROYAL iQ to start!**

#### DINING GUIDE

##### LUNCH

11:00 am - 5:00 pm	Café@Two70	Deck 5
11:30 am - 3:00 pm	Windjammer Marketplace	Deck 14
Noon - 2:00 pm	Coastal Kitchen (Suite Guests only)	Deck 14
Noon - 2:00 pm	Jamie's Italian (\$)	Deck 5
Noon - 2:00 pm	Izumi Japanese Cuisine (\$)	Deck 5
Noon - 2:00 pm	Devinly Decadence, Solarium	Deck 14

**ALL VENUES WILL BE CLOSED AT 4:00 PM AND WILL REOPEN FOLLOWING THE GUEST ASSEMBLY DRILL**

##### DINNER (Please allow 2 hours for dining)

5:30 pm - 9:00 pm	Windjammer Marketplace	Deck 14
5:30 pm - 9:30 pm	Coastal Kitchen (Suite Guests only)	Deck 14
5:30 pm - 9:30 pm	Silk	Deck 4
5:30 pm - 9:30 pm	American Icon Grill	Deck 4
5:30 pm - 9:30 pm	The Grande	Deck 3
5:30 pm - 9:30 pm	Chic	Deck 3
5:30 pm - 9:30 pm	Devinly Decadence, Solarium	Deck 14

##### SPECIALTY (Please allow 2 hours for dining)

6:00 am - 9:00 pm	La Patisserie (\$)	Deck 4
11:00 am - 1:00 am	Michael's Genuine Pub (\$)	Deck 4
11:00 am - 1:00 am	Vintages - Jamie's Italian Tapas (\$)	Deck 5
5:30 pm - 9:30 pm	Izumi Japanese Cuisine (\$)	Deck 5
5:30 pm - 9:30 pm	Jamie's Italian (\$)	Deck 5
5:30 pm - 9:30 pm	Chops Grille (\$)	Deck 5
5:30 pm - 9:30 pm	Wonderland (\$)	Deck 5
6:30 pm	Chef's Table (\$)	Deck 5

##### SNACKS

5:00 am - 3:00 am	Café Promenade	Deck 4
11:30 am - 3:00 am	Sorrento's Pizzeria	Deck 4
2:00 pm - 7:00 pm	SeaPlex Doghouse	Deck 15

##### BAR HOURS

For an early drink the Sunshine Bar, La Patisserie and Café@Two70 open at 7:00 am and the Pool Bar at 9:00 am. The Casino Bar, Boleros, Music Hall and Schooner Bar remain open later than other bars.

#### ALL DAY ACTIVITIES

24 hours	Community Bulletin Board - Friends of Bill W, LGBT, and other Gatherings - Royal Esplanade, Deck 4
24 hours	Welcome Aboard Video Address with your Cruise Director Ken Rush - Channel 14
24 hours	Trivia Sudoku, Cards & Games Available (Enter through Two70) The Library, Deck 6
24 hours	Shore Excursions Information - Channel 15 - Stateroom Television

#### MORNING SCHEDULE OF EVENTS

11:30 am - 3:30 pm	StarWater Show Reservations, Michael's Genuine Pub, Deck 4
11:30 am - 4:00 pm	Spa Tour with Free Massage, Vitality at Sea Spa, Deck 15
11:30 am - 10:00 pm	♫ Fitness Class Sign-ups, Vitality at Sea Fitness Center, Deck 16

#### AFTERNOON SCHEDULE OF EVENTS

Noon - 1:30 pm	FlowRider <sup>®</sup> Stand-up Surfing, FlowRider <sup>®</sup> , Deck 15
Noon - 2:30 pm	Bumper Cars, SeaPlex <sup>®</sup> , Deck 15
Noon - 3:00 pm	RipCord by IFLY (Reservations required), RipCord by IFLY, Deck 15
Noon - 3:00 pm	Adventure Ocean Open House and Registration, Adventure Ocean <sup>®</sup> , Deck 11, 12
Noon - 3:00 pm	Teenagers Open House (Ages 12-17), The Living Room, Deck 14
12:30 pm - 3:30 pm	North Star Open (Weather permitting), North Star, Deck 15
1:00 pm - 4:00 pm	♫ Meet your Personal Trainers and Fitness Class Sign-ups, Vitality at Sea Fitness Center, Deck 16
1:30 pm - 3:00 pm	FlowRider <sup>®</sup> Boogie Boarding, FlowRider <sup>®</sup> , Deck 15
4:00 pm	All Aboard
4:30 pm	Guest Assembly Drill
5:00 pm - 6:00 pm	RipCord by IFLY (Reservations required), RipCord by IFLY, Deck 15
5:00 pm - 6:00 pm	FlowRider <sup>®</sup> Stand-up Surfing, FlowRider <sup>®</sup> , Deck 15
5:00 pm - 6:45 pm	Open Rock Climbing, Rock Climbing Wall, Deck 15
5:00 pm - 7:00 pm	StarWater Show Reservations, Michael's Genuine Pub, Deck 4
5:00 pm - 7:00 pm	North Star Open (Weather permitting), North Star, Deck 15
5:00 pm - 8:00 pm	Complimentary Consultations: Hair Styling, Tooth Whitening and Facial Treatments, Vitality at Sea Spa, Deck 15
5:00 pm - 10:00 pm	Guess the Price of the Picasso Contest, Royal Esplanade, Deck 4

#### EVENING SCHEDULE OF EVENTS

6:00 pm - 6:15 pm	♫ DreamWorks Appearance: Skipper and Kowalski the Penguins of Madagascar, Shore Excursions, Deck 5
6:00 pm - 7:00 pm	FlowRider <sup>®</sup> Boogie Boarding, FlowRider <sup>®</sup> , Deck 15
6:00 pm - 7:30 pm	Adventure Ocean Registration, Adventure Ocean <sup>®</sup> , Deck 11, 12
7:00 pm - 8:00 pm	Family Disco Hour, Fuel Teen Disco, Deck 15
7:30 pm - 9:00 pm	Pre-Recorded Ballroom Music, Music Hall, Decks 3, 4
8:00 pm	Teen Meet and Greet (Ages 12-17), The Living Room, Deck 14



# Quantum of the Seas<sup>SM</sup>

- 8:00 pm - 8:15 pm 🎭 DreamWorks Appearance: Gronkle from How to Train Your Dragon, The Via, Deck 5
- 8:20 pm 🍷 StarWater Preshow, Two70°, Deck 5
- 8:30 pm 🍷 StarWater (Guests with reservations must be seated by 8:15 pm), Two70°, Deck 5
- 8:30 pm 🎭 Headliner Variety Showtime: starring Acapella Group Metro & Jeremy "Penguin" Ansley, Royal Theatre, Decks 4, 5
- 9:00 pm Swarovski Jewelry Event, Royal Esplanade, Deck 4
- 9:00 pm - 10:00 pm Teen Exclusive Dodgeball (Age: 15-17), SeaPlex®, Deck 15
- 9:30 pm Regalia Jewelry Salon Grand Opening, Regalia Jewelry, Deck 4
- 9:30 pm - 11:00 pm Groovy Town featuring your Cruise Director, Cruise Director's Staff and the Nexus Band, Music Hall, Decks 3, 4
- 10:00 pm - 11:00 pm Teen Exclusive Dodgeball (Age: 12-14), SeaPlex®, Deck 15
- 10:20 pm 🍷 StarWater Preshow, Two70°, Deck 5
- 10:30 pm 🍷 StarWater (Guests with reservations must be seated by 10:15 pm), Two70°, Deck 5
- 10:30 pm 🎭 Headliner Variety Showtime: starring Acapella Group Metro & Jeremy "Penguin" Ansley, Royal Theatre, Decks 4, 5
- 11:00 pm - late Dancing Under the Stars with your Cruise Director's Staff and DJ, Pool Deck, Deck 14
- Midnight Paradise Lotto Draw, Casino Royale, Deck 3
- 1:00 am Curfew - There is a Curfew for all of our Junior Cruisers (under the age of 18) not accompanied by a Parent or Guardian.

## MUSIC & DANCING

### Piano Melodies with Juanito

6:30 pm - 7:30 pm  
Schooner Bar, Deck 5

### Piano Melodies with Juanito

7:45 pm - 9:15 pm  
Schooner Bar, Deck 5

### Live Music with Luna Oceans Quartet

9:00 pm - 10:00 pm  
Boleros, Deck 4

### Piano Bar Music with Joe Hollywood

9:30 pm - 10:30 pm  
Schooner Bar, Deck 5

### Groovy Town featuring your Cruise Director, Cruise Director's Staff, and the Nexus Band

9:30 pm - 11:00 pm  
Music Hall, Decks 3, 4

### Live Music with Luna Oceans Quartet

10:15 pm - late  
Boleros, Deck 4

### Piano Bar Music with Joe Hollywood

10:45 pm - late  
Schooner Bar, Deck 5

### Party and Dance Music with Nexus Band

11:00 pm - late  
Music Hall, Decks 3, 4

### Dancing Under the Stars with your Cruise Director's Staff and DJ

11:00 pm - late  
Pool Deck, Deck 14

\* Musicians will take breaks during sets

